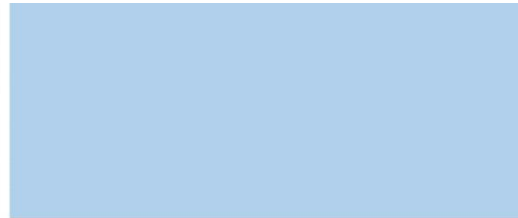


# Ambulatory Surgical Center (ASC) Quality Report

## Taylor Station Surgical Center (NPI-1942231493) Ohio

Q1 2014 – Q3 2016



*Please contact Mary Ellen Wiegand via email at [MWiegand@hsag.com](mailto:MWiegand@hsag.com)  
or by phone at 813-865-3446 for additional information.*





Figure 1. ASC-1: Patient Burn<sup>1</sup>

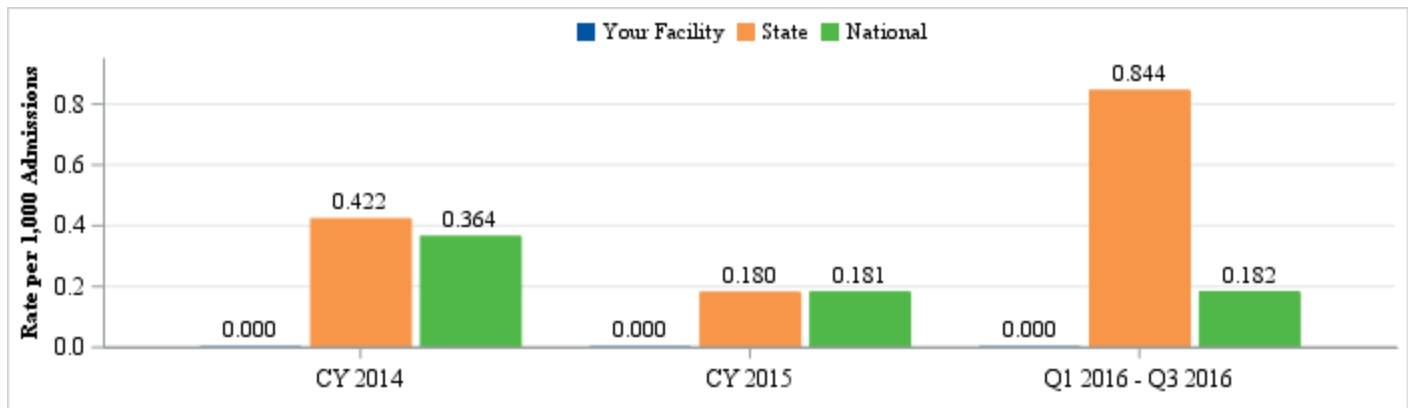


Figure 2. ASC-2: Patient Fall<sup>1</sup>

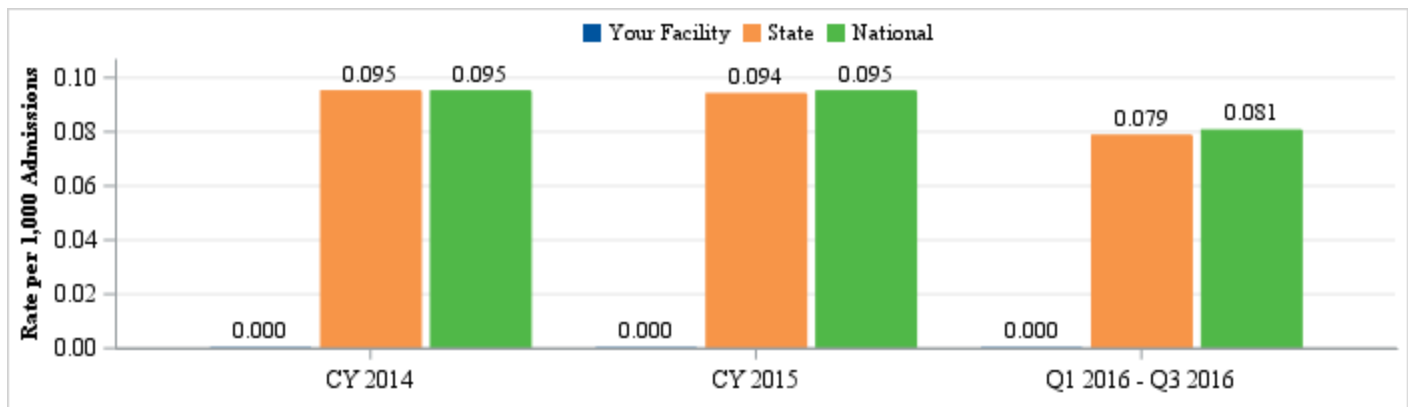
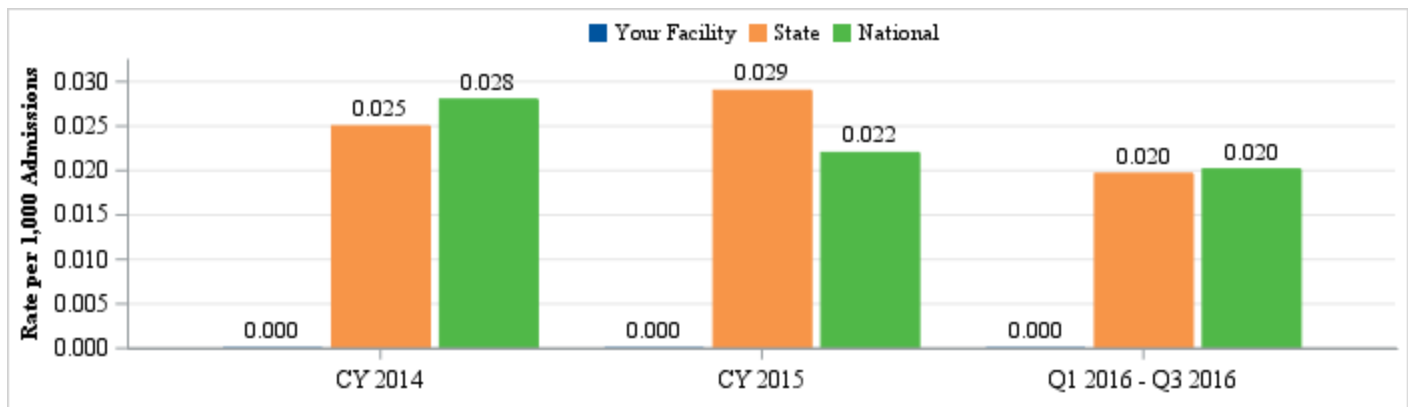


Figure 3. ASC-3: Wrong Site, Wrong Side, Wrong Patient, Wrong Procedure, Wrong Implant<sup>1</sup>



<sup>1</sup> An entry of "ND," or missing data points, indicate that data were unavailable for the specified time period. Not all facilities had data for the entire specified time period. National and State rates for CY 2014 and CY 2015 are based on data from Hospital Compare.



Figure 4. ASC-4: Hospital Transfer/Admission<sup>2</sup>

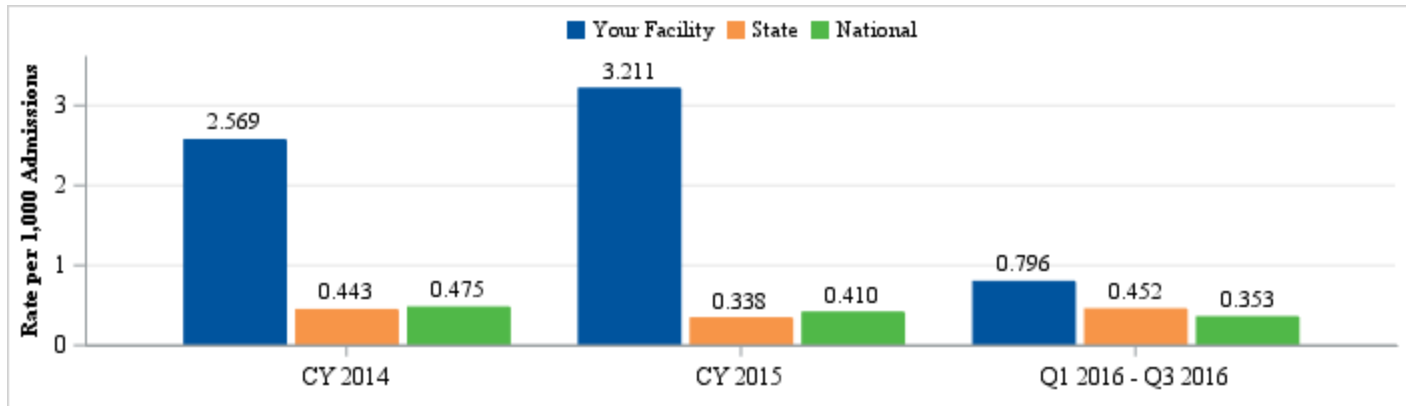


Figure 5. ASC-5: Prophylactic Intravenous (IV) Antibiotic Timing<sup>2</sup>

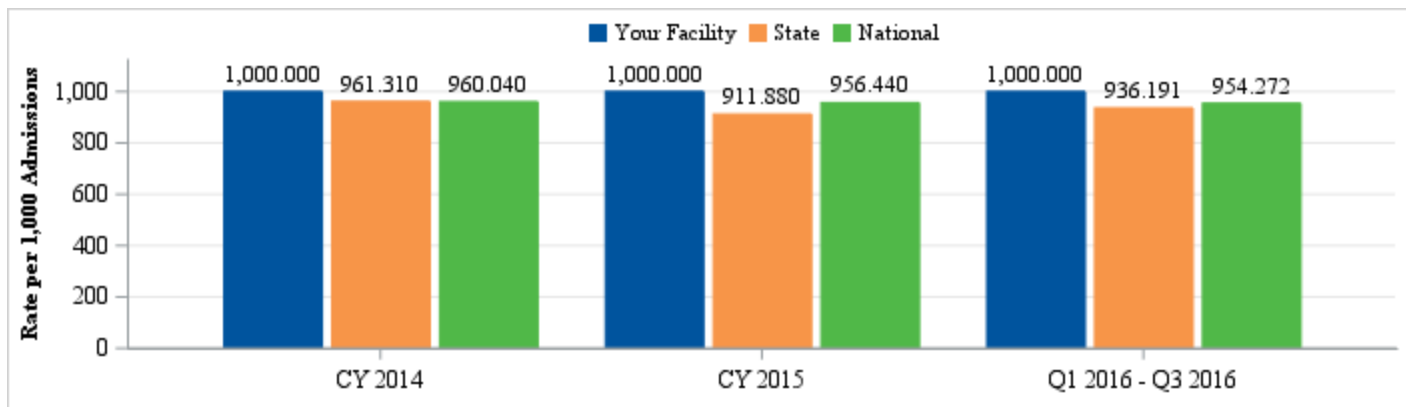


Table 1. ASC-6: Safe Surgery Checklist Use

ASC-6: Safe Surgery Checklist Use	CY 2014	CY 2015
Does your facility use a Safe Surgery Checklist?	Yes	Yes
Percent of facilities in your state using a Safe Surgery Checklist?	100.00%	100.00%
Percent of facilities in the nation using a Safe Surgery Checklist?	99.75%	99.81%

Table 2. ASC-7: ASC Facility Volume Data on Selected ASC Surgical Procedures

ASC-7: Count of Selected Surgical Procedures									
Location	Aggregate Count*	Gastrointestinal	Eye	Genitourinary	Musculoskeletal	Nervous	Respiratory	Skin	Multi System
Your Facility CY 2014	10,185	7,604	42	0	1,491	973	0	75	0
Your Facility CY 2015	9,597	7,246	14	0	1,455	817	16	49	0

\*The aggregate count is only for selected surgical procedures.

<sup>2</sup> An entry of "ND," or missing data points, indicate that data were unavailable for the specified time period. Not all facilities had data for the entire specified time period. National and State rates for CY 2014 and CY 2015 are based on data from Hospital Compare.



Figure 6. ASC-8: Influenza Vaccination Coverage Among Healthcare Personnel<sup>3</sup>

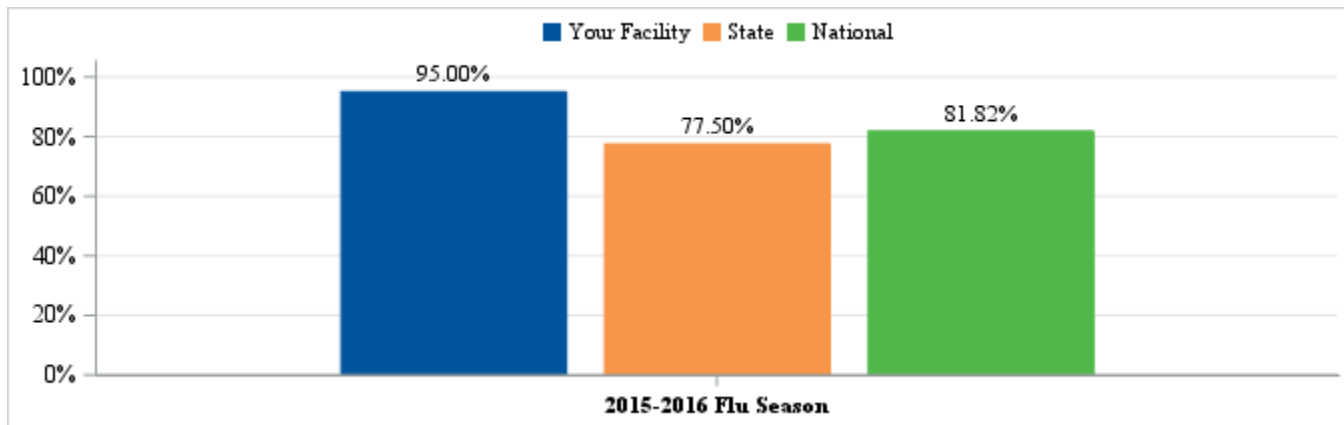


Figure 7. ASC-9: Endoscopy/Polyp Surveillance: Appropriate Follow-Up Interval for Normal Colonoscopy in Average-Risk Patients<sup>3</sup>

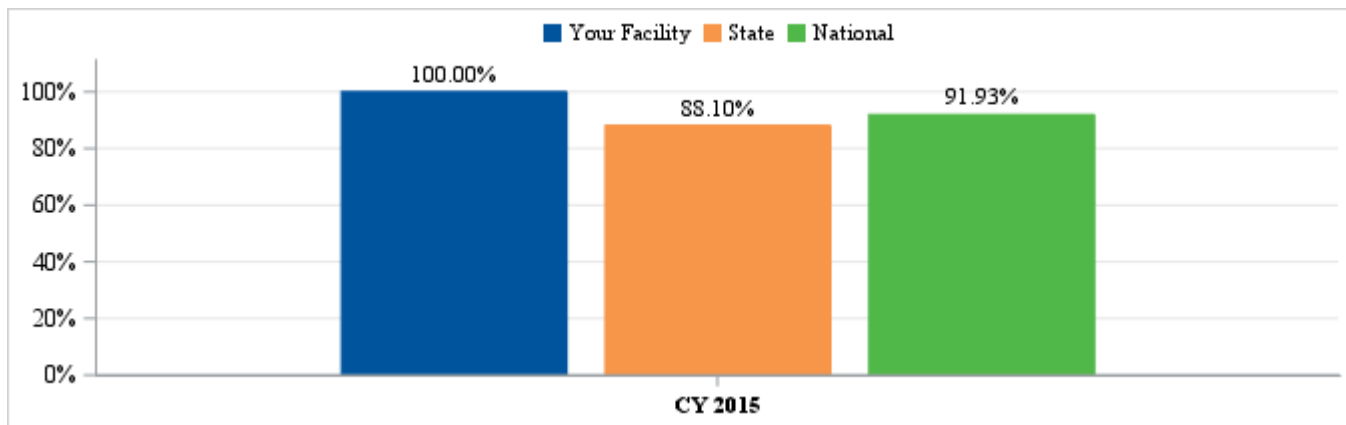
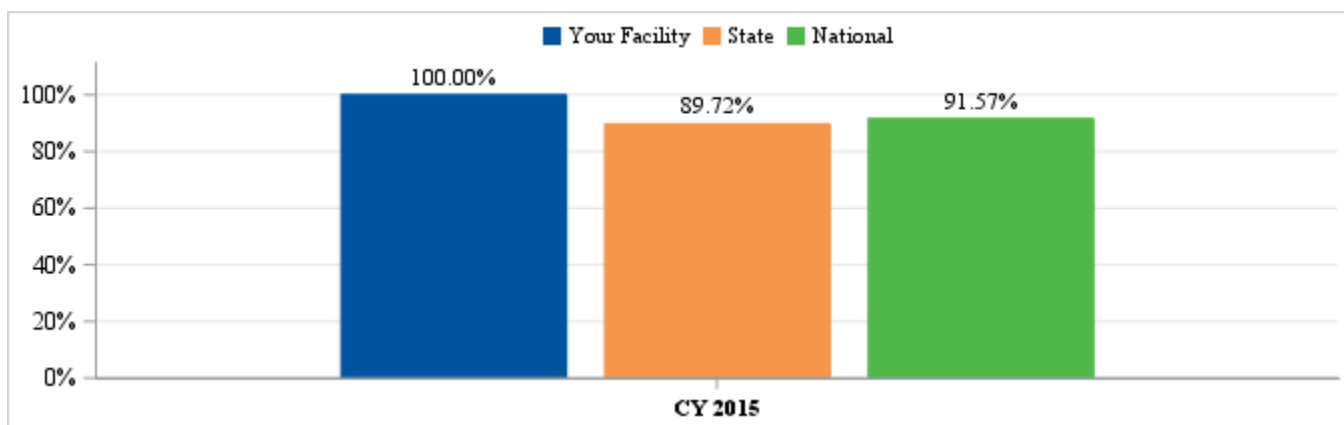


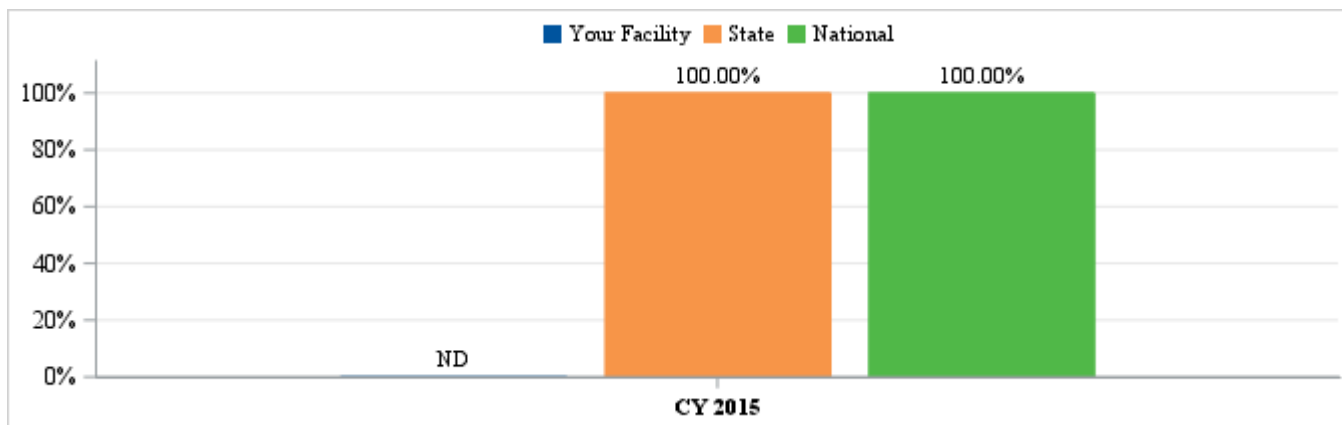
Figure 8. ASC-10: Endoscopy/Polyp Surveillance: Colonoscopy Interval for Patients With a History of Adenomatous Polyps—Avoidance of Inappropriate Use<sup>3</sup>



<sup>3</sup> An entry of “ND,” or missing data points, indicate that data were unavailable for the specified time period. Not all facilities had data for the entire specified time period. National and State rates for CY 2015 are based on data from Hospital Compare.



Figure 9. ASC-11: Cataracts: improvement in Patient's Visual Function within 90 Days Following Cataract Surgery<sup>4</sup>



<sup>4</sup> An entry of "ND," or missing data points, indicate that data were unavailable for the specified time period. Not all facilities had data for the entire specified time period. National and State rates for CY 2015 are based on data from Hospital Compare.